

55%  
SOLD



# SWANFIELD

OVER, CAMBRIDGESHIRE



BUSHMEAD  
HOMES

A selection of beautifully crafted 1, 2, 3, 4 and 5 bedroom homes



## WHERE VILLAGE CHARM MEETS MODERN CONVENIENCE

---

Over is home to a number of convenient amenities including a village shop, pharmacy, pub, community centre and village green. The village also benefits from a pre-school and an Ofsted rated 'Good' Primary School, making it ideal for both new and growing families.

A short drive away from Swanfield is Fen Drayton Lakes, where an abundance of wildlife can be found. Over boasts a strong community spirit with several clubs such as touch rugby, as well as events including the carnival and produce show. For family days out, the historic university city of Cambridge is easily accessible, offering plenty of culture and a range of independent and chain shops to explore.



“ With a rich history and surrounded by countryside views, Swanfield offers the opportunity to truly embrace village life. ”





## CONNECTED TO THE BEST

---

Whether car, bus or train, Swanfield benefits from convenient transport links to make travel to surrounding towns and cities a breeze. Situated between Huntingdon and Cambridge, Over does not sacrifice accessibility for its countryside location. Swanfield is located just a mile away from the Swavesey Guided Bus Station.



The Guided Busway provides quick and easy access between Huntingdon, St Ives and Cambridge. From Swavesey Guided Bus Station, you will be able to reach St Ives in 30 minutes and Cambridge in 31 minutes, avoiding the hassle of traffic and parking. Alongside this, Huntingdon Station is just 22 minutes away by car, which offers direct trains to London Kings Cross Station in just over an hour.



## HISTORY ON THE DOORSTEP

---

A little over 10 miles away, there's a wealth of history to be mined in county seat Cambridge. This historic town is home to a stunning selection of independent shops, cafés and restaurants, perfect for finding that hidden gem or catching up with friends.

There's also plenty for a fun family day out in the city centre: visit the Market Square for a eclectic range of stalls offering everything from books and music to food and ingredients from all over the world or delve into history in the Fitzwilliam Museum hosting exhibits from across time and space.

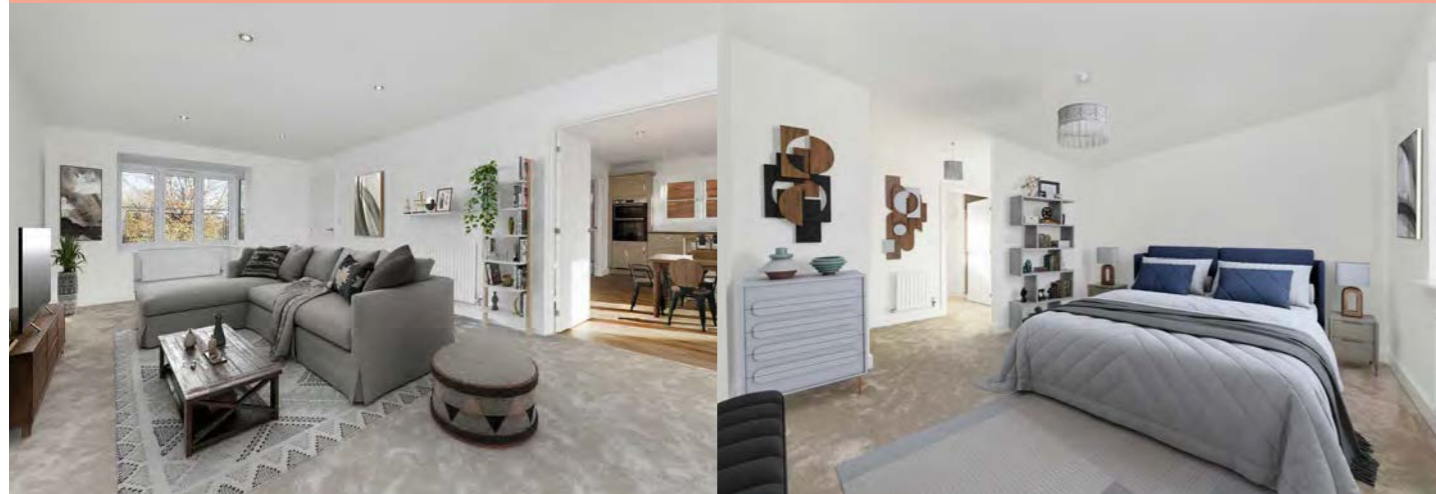
For those looking for peace and tranquillity, Cambridge's world-famous punting is available along the Backs, offering the ideal opportunity to photograph the iconic colleges, or walk along the River Cam for a respite from everyday life.

Over is ideally located to take advantage of the treasures that Cambridge has to offer every day.



## QUALITY & COMFORT

---



Bushmead Homes is a housebuilder with a refreshing and simple vision: to transform innovative and creative designs into practical and stylish homes.

Our commitment is to our customers, because we believe that by setting the highest standards, we build the finest homes.

“ Put simply, our homes reflect the local character and are built on select sites in the best locations. Each site has its own individual and unique style, having been carefully crafted to respect its surroundings. ”





## THE PERFECT PLACE TO CALL HOME

---

**The stunning homes at Swanfield have been thoughtfully designed for modern living, whilst complementing their idyllic countryside surroundings.**

Nestled in the sought-after Cambridgeshire countryside and surrounded by greenery, Swanfield is well located for easy access to nearby towns, offering the best of both worlds.



Aerial CGI intended for illustrative purposes only.





# SITE LAYOUT

## OUTRIGHT SALES

-  THE WARBLER  
2 BEDROOM SEMI-DETACHED HOME  
PLOTS 3, 4, 5, 6 & 14
-  THE CHAFFINCH  
3 BEDROOM SEMI-DETACHED HOME  
PLOT 13
-  THE OSPREY  
3 BEDROOM SEMI-DETACHED HOME  
PLOTS 1, 2, 25 & 26
-  THE BRAMLING  
4 BEDROOM DETACHED HOME  
PLOTS 7 & 11
-  THE SWAN  
5 BEDROOM DETACHED HOME  
PLOTS 8, 9, 10 & 12

## SHARED OWNERSHIP

-  THE TAWNY  
3 BEDROOM SEMI-DETACHED HOME  
PLOTS 15 & 16
-  THE KINGFISHER  
2 BEDROOM SEMI-DETACHED HOME  
PLOT 24

## AFFORDABLE RENT

-  THE GOLDFINCH  
2 BEDROOM SEMI-DETACHED HOME  
PLOTS 17, 18, 19 & 20
-  THE PLOVER  
1 BEDROOM SEMI-DETACHED HOME  
PLOTS 21 & 22
-  THE KINGFISHER  
2 BEDROOM SEMI-DETACHED HOME  
PLOT 23



 SOLD  
 LET

# THE WARBLER 2 BEDROOM SEMI-DETACHED HOME

Plots 3, 4, 5, 6 & 14



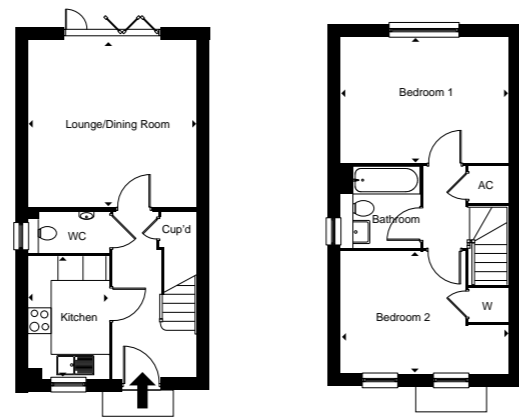
Photograph shows Plot 3

## GROUND FLOOR

Lounge/Dining	4.32 (14'2") x 4.26 (14'0")
Kitchen	3.12 (13'6") x 2.10 (6'11")

## FIRST FLOOR

Bedroom 1	3.26 (10'8") x 4.32 (14'2")
Bedroom 2	4.32 (14'2") x 3.12 (13'6")



Plot 14 - Includes a garage. Plots 4, 6 & 14 are mirrored.

Measurements shown are structural measurements and are guide only.

# THE CHAFFINCH 3 BEDROOM SEMI-DETACHED HOME

Plot 13



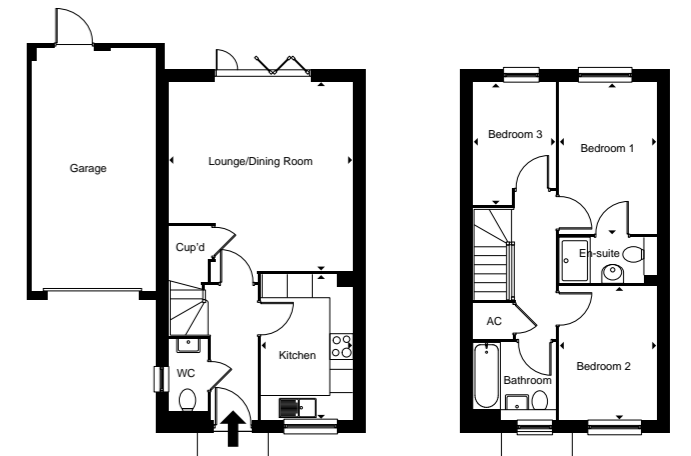
Photograph shows Plot 13

## GROUND FLOOR

Lounge/Dining	4.84 (15'11") x 4.72 (15'6")
Kitchen	3.72 (12'2") x 2.36 (7'9")

## FIRST FLOOR

Bedroom 1	3.85 (12'8") x 2.51 (8'3")
Bedroom 2	3.44 (11'3") x 2.51 (8'3")
Bedroom 3	3.11 (10'x2") x 2.15 (7'x0")



Measurements shown are structural measurements and are guide only.

# THE OSPREY 3 BEDROOM SEMI-DETACHED HOME

# THE BRAMLING 4 BEDROOM DETACHED HOME

Plots 1, 2, 25 & 26



Photograph shows Plot 1

Plots 7 & 11



Photograph shows Plot 7

## GROUND FLOOR

Lounge/Dining	5.67 (18'7") x 4.72 (15'6")
Kitchen	5.01 (16'5") x 2.62 (8'7")

## FIRST FLOOR

Bedroom 1	3.85 (12'8") x 2.52 (8'3")
Bedroom 2	3.43 (11'3") x 2.52 (8'3")
Bedroom 3	3.12 (10'3") x 2.14 (7'0")



Plots 2 & 26 are mirrored.

Measurements shown are structural measurements and are guide only.

## GROUND FLOOR

Kitchen/Dining	4.20 (13'9") x 6.59 (21'7")
Sitting	6.59 (21'7") x 3.65 (12'0")

## FIRST FLOOR

Bedroom 1	4.25 (13'11") x 4.22 (13'10")
Bedroom 2	3.05 (10'0") x 3.39 (11'1")
Bedroom 3	3.85 (12'8") x 3.14 (10'4")
Bedroom 4	2.30 (7'7") x 3.03 (9'11")



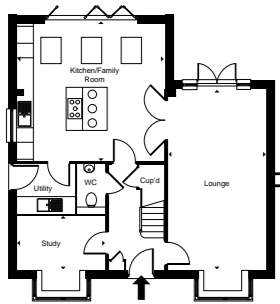
Plot 11 is mirrored.

Measurements shown are structural measurements and are guide only.



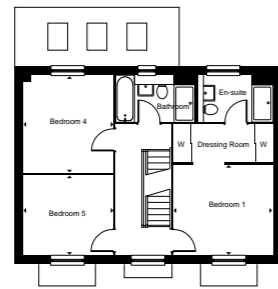
# THE SWAN 5 BEDROOM DETACHED HOME

Plots 8, 9, 10 & 12



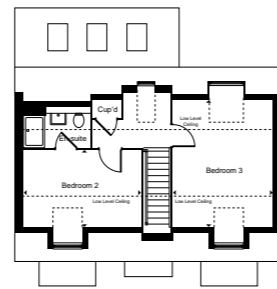
## GROUND FLOOR

Lounge 6.81 (22'4") x 3.73 (12'3")  
 Kitchen/Family 5.57 (18'3") x 5.21 (17'1")



## FIRST FLOOR

Bedroom 1 3.76 (12'4") x 3.52 (11'7")  
 Bedroom 4 3.40 (11'2") x 3.70 (12'2")  
 Bedroom 5 3.05 (10'0") x 3.40 (11'2")



## FIRST FLOOR

Bedroom 2 4.45 (14'7") x 2.93 (9'7")  
 Bedroom 3 4.87 (16'0") x 3.79 (12'5")

Plots 8, 9 & 10 are mirrored.

Measurements shown are structural measurements and are guide only.



## MODERN & SPACIOUS INTERIORS

Bushmead Homes provides the highest quality building materials and interior specification, ensuring a contemporary yet stylish feel to all our homes.



# SPECIFICATION

PLOT	HOUSETYPE	STYLE	COLOUR	WORKTOPS	HANDLES	OVEN, HOB & COOKER HOOD
1	THE OSPREY	Alta	Gloss Pure White	Chalet Oak	Polished Chrome	Zanussi single oven, 4 ring hob
2	THE OSPREY	Alta	Anthracite	Arctic Marble	Brushed Copper	Zanussi single oven, 4 ring hob
3	THE WARBLER	Alta	Gloss Pure White	Chalet Oak	Polished Chrome	Zanussi single oven, 4 ring hob
4	THE WARBLER	Alta	Anthracite	Arctic Marble	Brushed Copper	Zanussi single oven, 4 ring hob
5	THE WARBLER	Alta	Gloss Pure White	Chalet Oak	Polished Chrome	Zanussi single oven, 4 ring hob
6	THE WARBLER	Alta	Anthracite	Arctic Marble	Brushed Copper	Zanussi single oven, 4 ring hob
7	THE BRAMLING	Princeton	Chalk White	Grey Terrazzo	Polished Chrome	Bosch/Neff double oven, 5 ring hob
8	THE SWAN	Cranbrook	Sage	Chalet Oak	Brushed Copper Bridge	Bosch/Neff double oven, 5 ring hob
9	THE SWAN	Princeton	Chalk White	Grey Terrazzo	Polished Chrome	Bosch/Neff double oven, 5 ring hob
10	THE SWAN	Cranbrook	Stone	Chalet Oak	Polished Chrome	Bosch/Neff double oven, 5 ring hob
11	THE BRAMLING	Cranbrook	Sage	Chalet Oak	Polished Chrome	Bosch/Neff double oven, 5 ring hob
12	THE SWAN	Cranbrook	Stone	Chalet Oak	Polished Chrome	Bosch/Neff double oven, 5 ring hob
13	THE CHAFFINCH	Alta	Gloss Pure White	Chalet Oak	Polished Chrome	Zanussi single oven, 4 ring hob
14	THE WARBLER	Alta	Gloss Pure White	Chalet Oak	Polished Chrome	Zanussi single oven, 4 ring hob
25	THE OSPREY	Alta	Anthracite	Arctic Marble	Brushed Copper	Zanussi single oven, 4 ring hob
26	THE OSPREY	Cranbrook	Sage	Chalet Oak	Brushed Copper	Zanussi single oven, 4 ring hob

KITCHEN
  FLOORING
  BATHROOM
  GENERAL

# SPECIFICATION

KITCHEN SINK	KITCHEN TAP	KITCHEN TILES	FLOORING	BATHROOM
Livit Stainless Steel 1.5 bowl	Envoy	Metro style White	Amtico Spacia Vinyl Flooring Coyote Carpets	Toilet – Roca The Gap
Livit Stainless Steel 1.5 bowl	Envoy	Metro style White	Amtico Spacia Vinyl Flooring Coyote Carpets	Basin – Roca The Gap
Livit Stainless Steel 1.5 bowl	Envoy	Metro style White	Amtico Spacia Vinyl Flooring Coyote Carpets	Bath – Roca The Gap
Livit Stainless Steel 1.5 bowl	Envoy	Metro style White	Amtico Spacia Vinyl Flooring Coyote Carpets	Floor tiles – Chalk finish natural range
Livit Stainless Steel 1.5 bowl	Envoy	Metro style White	Amtico Spacia Vinyl Flooring Coyote Carpets	Wall tiles – Chalk finish natural range
Livit Stainless Steel 1.5 bowl	Envoy	Metro style White	Amtico Spacia Vinyl Flooring Coyote Carpets	Bath taps – Hansgrohe ecostat mixer
Metra Alumetallic 1.5 bowl	Ellipse	Metro style White	Amtico Spacia Vinyl Flooring Coyote Carpets	<b>GENERAL</b>
Metra White 1.5 bowl	Ellipse	Metro style White	Amtico Spacia Vinyl Flooring Coyote Carpets	10 year NHBC warranty
Metra Alumetallic 1.5 bowl	Ellipse	Metro style White	Amtico Spacia Vinyl Flooring Coyote Carpets	Traditional build
Metra White 1.5 bowl	Ellipse	Metro style White	Amtico Spacia Vinyl Flooring Coyote Carpets	Double glazed windows, doors with 5 point locking
Metra White 1.5 bowl	Ellipse	Metro style White	Amtico Spacia Vinyl Flooring Coyote Carpets	Outdoors - patio, paving, fences, external lights, tap, turf
Metra White 1.5 bowl	Ellipse	Metro style White	Amtico Spacia Vinyl Flooring Coyote Carpets	Gas central heating
Livit Stainless Steel 1.5 bowl	Envoy	Metro style White	Amtico Spacia Vinyl Flooring Coyote Carpets	Appliances - Zanussi dishwasher, washing machine & fridge/freezer
Livit Stainless Steel 1.5 bowl	Envoy	Metro style White	Amtico Spacia Vinyl Flooring Coyote Carpets	PV Panels to Plots 8, 9 & 10
Livit Stainless Steel 1.5 bowl	Envoy	Metro style White	Amtico Spacia Vinyl Flooring Coyote Carpets	
Metra White 1.5 bowl	Ellipse	Metro style White	Amtico Spacia Vinyl Flooring Coyote Carpets	

Specification is subject to change. Please speak to your sales advisor for plot specific specification information.



BUSHMEAD  
HOMES

[bushmeadhomes.co.uk](http://bushmeadhomes.co.uk)



BIDWELLS

FOR ALL ENQUIRES PLEASE CONTACT SELLING AGENTS  
EMAIL: [SWANFIELD@BIDWELLS.CO.UK](mailto:SWANFIELD@BIDWELLS.CO.UK) PHONE: 01223 841842



YOUR HOME MAY BE REPOSSESSED IF YOU DO NOT KEEP UP PAYMENTS ON A MORTGAGE OR ANY OTHER DEBT SECURED ON IT

All property images are used for illustrative purposes and are representative only. They may not be the same as the actual home you purchase and the specification may differ. Individual features such as windows, brick, carpets, paint and other material colours may vary and also the specification of fittings may vary. Any furnishings and furniture are not included in any sale. Please check with a member of the Bushmead Homes sales team for details of the exact specifications available at the development for each type of home and the associated prices.